

***Belarusian
State
University***



**Belarusian State University
is a leading educational
center in Belarus.
Founded
on October 30 ,1921**





Belarusian higher education history is closely connected with the history of Belarusian State University.

1390 students started attending classes in its three faculties: labor, medical and social sciences

Only

14 professors and 25 candidates of sciences

were among first lecturers

In 2008-2009
academic year
16 faculties and
4 educational institutes
of BSU taught about
25 000 students in
53 specialties



Top class specialists
are trained in BSU
doctor, post-graduate
and master courses.
Annually the university
trains 750 doctor and
candidate applicants.

BSU staff

Total	8450
Teaching staff	2850
Scientific manpower (researchers)	800
Doctors of Science	410
Candidates of Science	1650



School-leavers training

BSU lyceum is a senior degree for pupils of 10-11-x forms. The lyceum makes purposeful selection of pupils and carries out work with those who showed exceptional abilities in natural sciences and the humanities . 24 specialized classes are available for 500 students including those living outside Minsk.

Law college:

Specialties:

State- and- legal activity,
law-and-legal activity,
economical-and-legal
and personnel work



For foreign nationals



Pre-university training faculty

enables foreign students to learn Russian and adapt their knowledge to the system of education currently available in our university

300 foreign nationals
per year

Annually BSU gives education
higher 750
post-university 65

Foreign nationals from 42 countries:
Russia, Ukraine, Moldavia,
China, Iran, Libya, Lebanon, Nigeria,
Syria, Vietnam and other



Natural sciences faculties and specialties

Faculty of applied mathematics and informatics

- Applied mathematics
- Informatics
- Economical cybernetics
- Actuarial mathematics
- Computer security

Faculty of radiophysics and electronics

- Radiophysics
- Physical electronics
- Commerce
- Computer security

Faculty of physics

- Physics
- Commerce

Faculty of biology

- Biology
- Biotechnology
- Bioecology

Mechanical and mathematical faculty

- Mathematics
- Mathematical electronics
- Computer mathematics
- Economic activity
- Mechanics

Faculty of Geography

- Geography
- Geographic informational systems
- Geoecology
- Geology and mineral exploration

Faculty of chemistry

- Chemistry
- Ecology

BSU students – winners of International Competitions

7 years of participation – annual reaching the finals
2004 – Gold medals
2005 – Absolute team victory of all participants of competition in mathematics



IMC – International Mathematic Competition
ICPC – International Competition on Personal Computers



Over the 7 years of participation:

- **26 gold medals**
- **18 silver medals**
- **10 bronze medals**
- **6 Grand Prix**
- **3 absolute first places**

Faculty of Physics



Faculty of Biology



Faculty of biology

Zoological museum



- Over 120 000 exhibits
- Republican Center of zoological collections named after A.V.Fedjushin
- Museum's zoological collections are registered as especially valuable



Faculty of Geography



Faculty of Geography

Physical geography museum

- More than 16 thousand of exhibits
- On average 10 thousand people attend the museum annually
- In 1994 the museum entered the world directory on mineral collections. “World Directory of Mineral Collections”
- The museum is a member of Association of CIS mineral museums





Students' summer training



- Braslau training-and research center
- Training geological station «West Berezina»
- Training-and-research center «Naroch biological station»



Economic and social profile faculties and specialties

Faculty of philosophy and social sciences

- Philosophy
- Sociology
- Psychology
- Information and communication

Institute of management and social technologies

- Jurisprudence
- management
- Social work
- Marketing
- Design

Faculty of Law

- Law
- Political science
- Economic law

Institute of business and management of technologies

Business administration

Faculty of economics

- Economic theory
- Economics
- Management
- Finances and credit

Faculty of international relations

- International relations
- International law
- World economy
- Customs
- Management
- Linguistic regional geography
- Culture science
- Modern foreign languages

Institute of theology named after St. Cyril and Mephodius

Military faculty

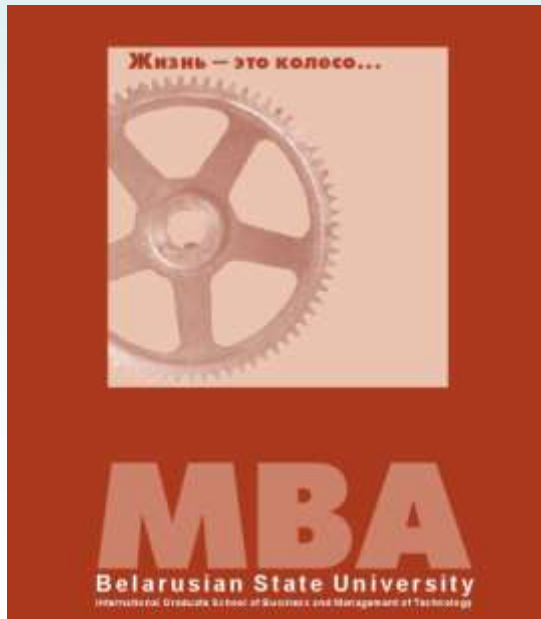
Master's Programs of the SBMT

- **Master of Business Administration**

A two year program corresponds to American standard of business school **MBA**. The language of instruction is predominantly English

- **Master of Science in Logistics**

Joint graduate program in cooperation with Molde University College, Norway. The language of instruction is Russian and English



Our Partners

- **USAID / Eurasia**
- **Swedish Institute**
- **Vaxjo University, Sweden**
- **Central Washington University, USA**
- **Molde University College, Norway**
- **Indiana University Northwest, USA**
- **Nebraska Lincoln University, USA**

The humanities faculties

Faculty of history

- History
- Museums and historical and cultural heritage protection
- Historical –archiving
- Documentation and informational control support

Humanity faculty

- Communication design
- WEB-design
- International relations
- Sociology
- Psychology
- Social work
- Modern foreign languages

Faculty of Philology

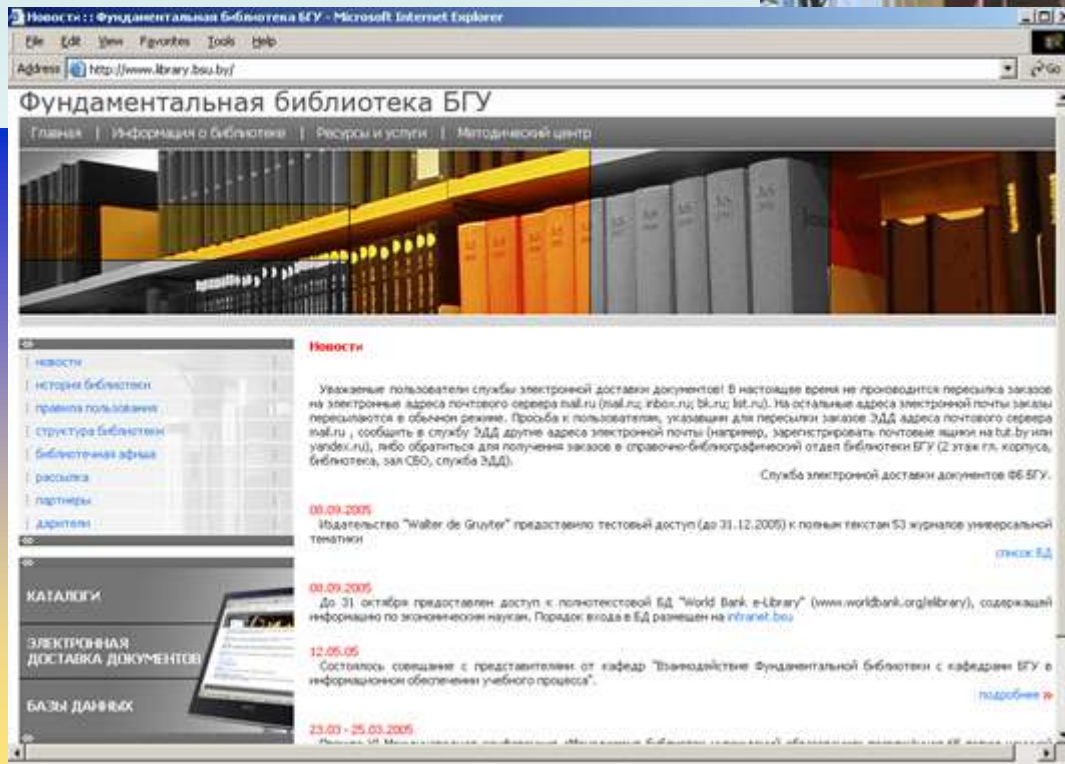
- Belarusian philology
- Russian philology
- Slavic philology
- Classical philology
- Roman-Germanic philology
- Oriental philology

Faculty of journalism

- International journalism
- Literary work
- Information and communication
- Journalism

Universal library stock
makes **2 million copies** of
documents in Belarusian,
Russian and foreign
languages

Main library



<http://www.library.bsu.by>



Educational process information support

- Distance learning system
- Free access to Internet recourses
- Specialized information resources
BSU Internet - networks
- Students self-checking testing system «Electronic university»

Over 48 km. of fiber-optic communications connect all educational and management buildings

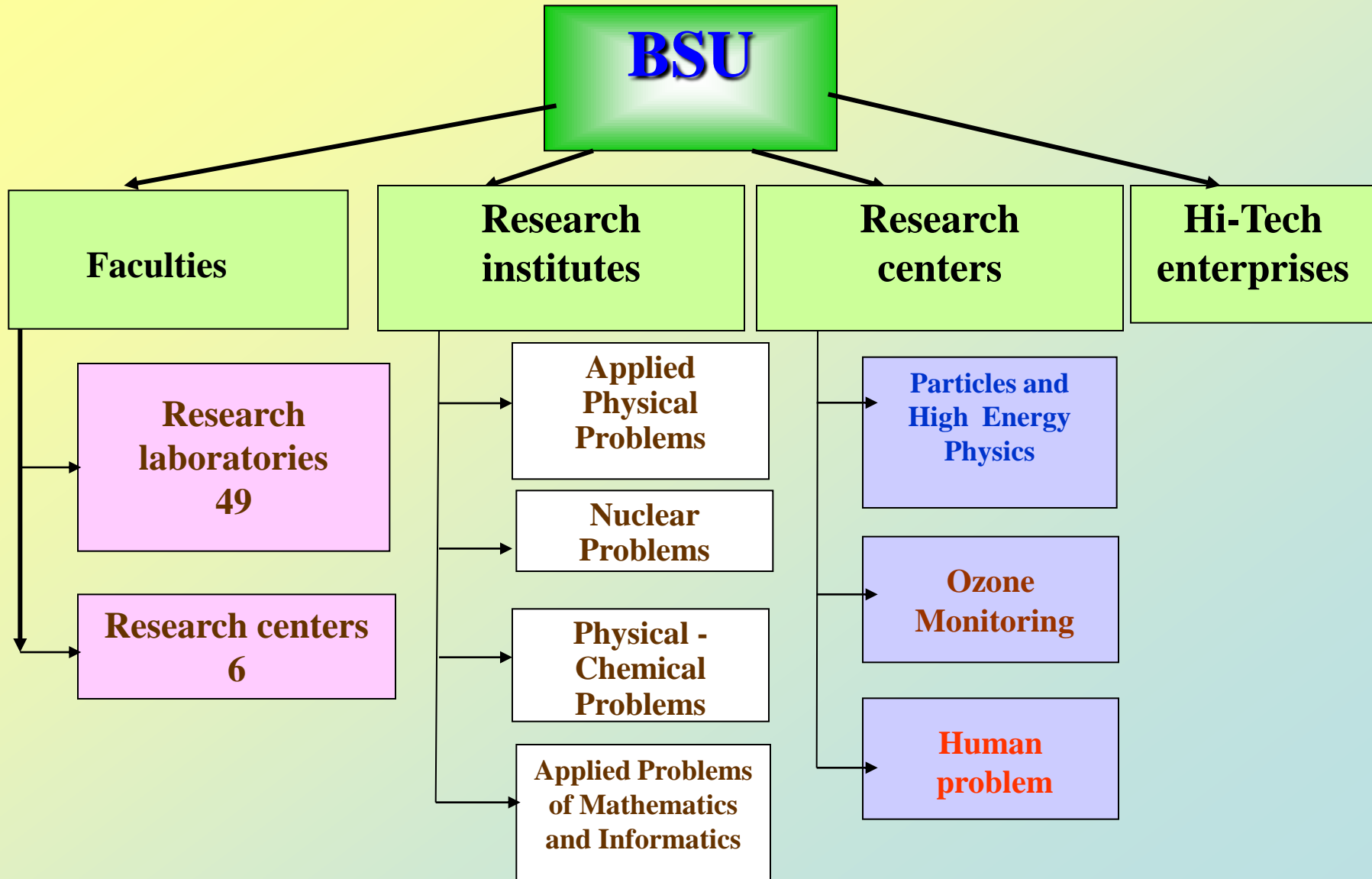


High skilled specialists training

- Specialties count
 - postgraduate course – 115
 - Doctor's course - 29
- Postgraduate students - 600
- Doctor's degree – 20
- Postgraduate students – foreign nationals - 65



Research-Innovation Structure



Science management

Research and development main coordinating center

The purpose of R&D main coordinating center is to organize and provide unified integral and flexible control system, to coordinate and develop research and research- and- innovation activities of BSU's structural divisions and institutions dependent on it

Research and development department

R&D department unifies and coordinates scientific , research and innovation activities of faculties , chairs, research laboratories , temporary research teams and other divisions carrying out and providing research.

BSU faculties avail 49 research laboratories and 6 research centers



Fundamental research

- **Nanostructures and nanotechnologies**
- **Elementary particles and high-energy physics**
- **Laser technologies**
- **Space research**
- **Theory of differential and integral equations**
- **Complex systems mathematical modeling**
- **Research in the field of development of new materials and technologies**
- **Biotechnologies and generic engineering**
- **Concept of macroeconomic stabilization in Belarus**
- **Juvenile law**
- **Development of National Atlas of Belarus**

BSU researches material and technical basis

Four Centers of sharing use of unique research equipment are available in BSU

- Belarusian inter-university center of research facilities
- Center of sharing use of devices and equipment of faculty of biology
- Laboratory of physical-and-chemical methods of research RI PCP
- Center of nanotechnologies and physical electronics



CSP concentrates up to 70 % of BSU's total park of new expensive and unique equipment

RI of Applied Physical Problems named after A.N.Sevchenko

RI APP employs

- 236 researchers and engineers
- 17 doctors of science
- 34 candidates of science
- 4 professors
- 3 associate-professors



Main directions

- Spectroscopy and luminescence
- Ultrasonic and electromagnetic waves
- Nuclear and powerful electromagnetic radiations
- Semiconductors and other materials for electronics and machine building
- Fast processes in applied tasks of physics
- Data processing measuring-calculating facilities
- Intelligent control systems

Research Institute of Nuclear Problems

**RI NP director- Barishevski V.G. –
author of two discoveries of USS in the field of
nuclear physics
(№224 from 1979 and №360 from 1981 г.).**

- Institute employs :
66 researchers and engineers
- 7 doctors and
20 candidates of sciences

Structure

- Nuclear research division
- Coherent and non-linear process division
- High energies physics division
энергий
- Pilot-optical area
- Pilot-mechanical area



Institute has different international contacts and closes cooperates with United Institute of Nuclear Research (Russia), and is a collaborating member of CMS in CERN, DO and BTeV in FNAL (USA)

Research Institute of Physical-and Chemical Problems

RI PCP employs

- 164 researchers and engineers
- 7 doctors and 70 candidates of sciences



- Nanocrystal , amorphorous, fine and composite materials
- Natural and synthetic polymers
- Energy-and- source saving technologies to manufacture organic substances, materials and fuels.
- New medications
- Inorganic materials synthesis and modification.
- High-temperature electrochemical and electronic devices
- Magnetic, thermo- and wear-resistant materials
- New organic compounds synthesis
- Extraction and sorption processes

Main directions

National research-and training center of particles and high-energy physics

The center employs:

- 41 researchers and engineers
- 3 doctors of science
- 7 candidates of science
- 2 professors



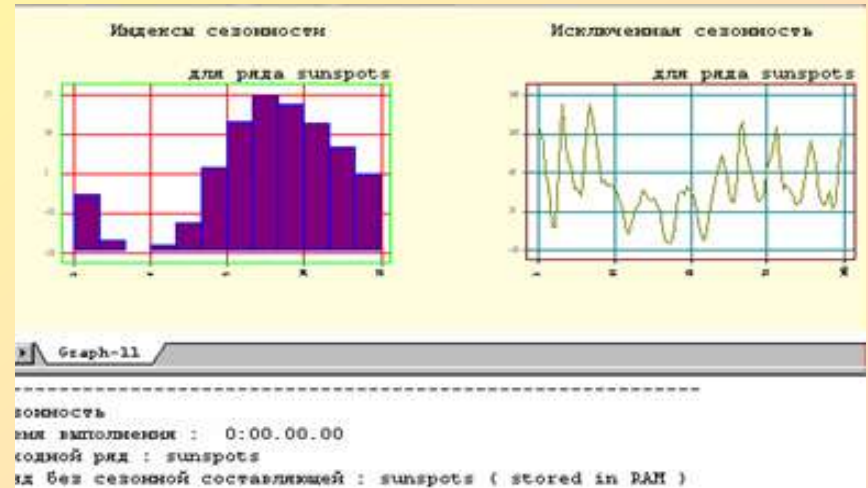
Main directions

- Theoretical and experimental research of fundamental interactions and structures of micro particles at high energies
- Methods of recording of micro particles at extreme conditions
- Organizational support of research carried out in United Institute of Nuclear Researches (UINR, Dubna, Russia) with participation of organizations and institutions of Republic of Belarus



Research Institute of Applied Problems of Mathematics and Informatics

Staff: 24 researches including 2 doctors and 8 candidates of sciences. Over 30 BSU lectures, postgraduate students and students take part in the research of the Center.



Main directions

- Computer data analysis
- Mathematic modeling of complex systems, processes and phenomena in economics , engineering, ecology, medicine and other branches of national economy
- Software in the field of theoretical and applied informatics
- Mathematical methods of information security, cryptography

National Research Center of Ozonosphere monitoring

Main directions

- Development of measuring equipment for ozonosphere monitoring
- On-line monitoring , analysis and forecast of ozonosphere condition and levels of surface ultraviolet radiation
- Taking measurements under BMO Global Atmosphere Watch
- Research in the field of ozonosphere physics, problems of ozonosphere preservation



The division employs
25 researchers
1 doctor of science
7 candidates of science
1 professor

Hi-Tech enterprises of the BSU

- **Unitehprom BSU** - Small-scale chemical and equipment production of various purpose
- **Unihimprom BSU** – Development of the technology of diesel biofuel production from vegetable oils and other accompanying products
- **Unidragmet BSU** - treatment of man-caused waste containing precious and non-ferrous metals treatment
- **Adamas BSU** - Production of diamond monocrystals and instruments made of them
- **Engineering department of the special purpose technical division of the BSU** – Production of computers, traffic controllers and systems of traffic control, software&hardware for medical experts
- **Active BSU** – Production of training devices for physical experiment, vacuum engineering and forage additives
- **Sand BSU** – Production of tests systems for drug detection

Basic R&D products of the BSU

Hardware-software complexes, devices and equipment

- Hardware-software complexes
- Control instrumentation
- Medical devices
- High-end devices and integrated circuits
- Training devices, equipment, systems

Equipment and instrument Substances and materials

- Industrial substances
- Protective substances and materials
- Medical substances and reagents
- Biopreparations

Technologies

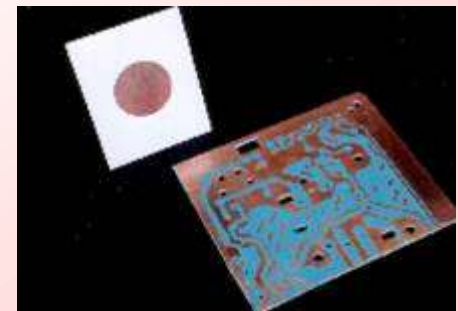
- Biotechnologies
- Industrial technologies
- Information high-end technologies
- Information training technologies



**More than 1000 items
altogether**

Basic fields of application

- Environmental protection and human ecology
- Agriculture and food production
- Resource and energy saving
- Medicine
- Small-scale chemistry
- Precious metals and stones
- Geo-information systems
- Statistical prediction
- Information protection
- Metal-working
- Oil prospecting and production
- Instrument-making
- Radio electronics
- Training
- Automated management systems



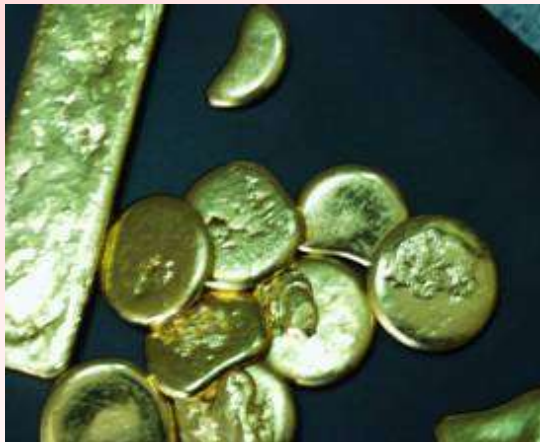
Artificial diamonds manufacturing procedure , thermocuring



ADAMAS BSU
is the largest in Europe
specialized enterprise to
manufacture synthetic diamonds
for various-purposes:
instrumental, tool, jewelry.

UNIDRAGMET

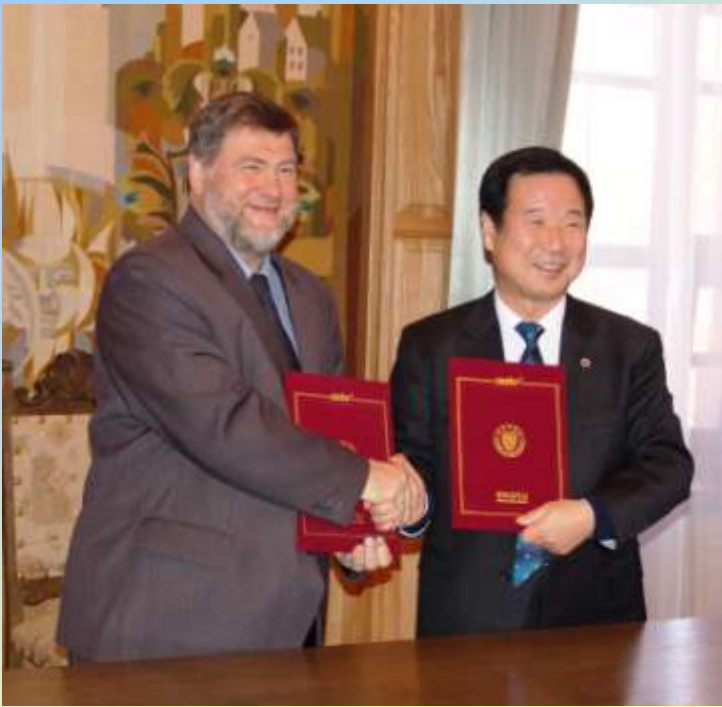
- Technology of extraction of gold, silver and other precious metals from man-made wastes
- Technology of obtaining salts and compositions containing precious metals
- Modern technologies of precious metals analysis



Gold reserves of Republic of Belarus



International co-operation



BSU partners



In 2008 developments of the BSU were sold to 26 countries of the world in accordance with 83 contracts

Austria
Armenia
Germany
Israel
China
Korea
Latvia
Lithuania
Russia
Ukraine
USA
Japan

.....

Welcome to Belarus !

The Republic of Belarus is located in the eastern part of Europe.



In the west it borders on Poland, in the northwest – on Lithuania, in the north – on Latvia, in the northeast and east – on Russia, in the south – on Ukraine.

Belarus' population numbered 10 millions people.

Belarus' area is 207.6 thousand square kilometers.

Agricultural lands occupy 45% of our territory, including 30% of tillage. Forests cover 36% of the area.



Contacts

***4, Nezavisimosti Ave, Minsk, 220050, Belarus
Belarusian State University***



**Phone (+375-17) 209-54-31
Fax (+375-17) 209- 53-24**

**E-mail: exhibition@bsu.by
www.bsuproduct.by**